

Profile of Nainwa Welfare Trust)

TrustName	Nainwa welfare Trust
Registered under	Trust act 1882
Account Title	Nainwa Welfare Trust (sfh)
Registration #	3303 OF 2019
Account & Bank Detail	Pk26HABB0023857000375603BRANCH HBL BHAKKAR PANJAB PAKISTAN

Vision

Empowered, healthy and prosperous local communities especially women and girls in an equitable and just society.

Mission

To improve health ,economic, social conditions of the poorest communities, women, laborers and the disabled through sustainable development.

NAINWA WELFARE TRUST (SYEDA FATIMA-TU-ZAHRA SALAAM-ULLAH-E-ALEEIHA HOSPITAL)'s Background

NAINWA WELFARE TRUST (SYEDA FATIMA-TU-ZAHRA SALAAM-ULLAH-E-ALEEIHA HOSPITAL) is a non-profit, non-governmental Trust which is registered with provincial Government under the **Trust act 1882 in 2019.**

NAINWA WELFARE TRUST (SYEDA FATIMA-TU-ZAHRA SALAAM-ULLAH-E-ALEEIHA HOSPITAL) works with rural and urban communities to provide humanitarian relief, improve, health, education , economic conditions, capacity building and social development in remote and disaster-prone areas of Pakistan.

NAINWA WELFARE TRUST (SYEDA FATIMA-TU-ZAHRA SALAAM-ULLAH-E-ALEEIHA HOSPITAL) was founded in 2003 to support and empower poor women through skills. Its first intervention was initiated in District Bhakkar with basic literacy skills and primary education. Mainly based in Punjab, NAINWA WELFARE TRUST (SYEDA FATIMA-TU-ZAHRA SALAAM-ULLAH-E-ALEEIHA HOSPITAL) was established to support women facing health, socio-economic difficulties through the provision of, health, education, rights awareness, and vocational training.

NAINWA WELFARE TRUST (SYEDA FATIMA-TU-ZAHRA SALAAM-ULLAH-E-ALEEIHA HOSPITAL) overtime expanded its focus population to include humanitarian relief to communities, caring for and educating those displaced during the natural disasters which frequently occur in Pakistan.

NAINWA WELFARE TRUST (SYEDA FATIMA-TU-ZAHRA SALAAM-ULLAH-E-ALEEIHA HOSPITAL) started its initial work with the National Commission of Human Development in District Bhakkar on an Adult Literacy project, Universal Primary Education, and Health in 2003 while it was still an unregistered organisation. Later on NAINWA WELFARE TRUST (SYEDA FATIMA-TU-ZAHRA SALAAM-ULLAH-E-ALEEIHA HOSPITAL) also developed a partnership with Ahsan Welfare Trust Lahore for the provision of free medical and eye camps and in the humanitarian disaster following the devastating floods in 2010. NAINWA WELFARE TRUST (SYEDA FATIMA-TU-ZAHRA SALAAM-ULLAH-E-ALEEIHA HOSPITAL) was also engaged in the delivery of food aid during the relief phase, distributing dry and cooked food among 500 families with the support of volunteers and individual philanthropists.

Geographical Presence

Since inception, NAINWA WELFARE TRUST (SYEDA FATIMA-TU-ZAHRA SALAAM-ULLAH-E-ALEEIHA HOSPITAL) has been working in Punjab, Pakistan's most populous provinces. This is a region which displays great poverty, vulnerabilities and marginalization alongside high degree of industrialization and urbanization among people who are multi-ethnic, multi-sect as well as linguistically diverse. In addition, these areas undergo the effects of the frequent natural disasters which further exacerbates the poverty and marginalization.

1. District Layyah – assessment conducted.
2. District Rajanpur – assessments conducted.
3. District Bhakkar ongoing project in Health, Education and Vocational and Technical Education (VTE).

Our Values

- **Equity:** NAINWA WELFARE TRUST (SYEDA FATIMA-TU-ZAHRA SALAAM-ULLAH-E-ALEEIHA HOSPITAL) will promote human rights, equity and fairness in both its work and office environments through a recognition and removal of systemic barriers to fair and just distribution of resources, access and opportunity.
- **Humanity:** NAINWA WELFARE TRUST (SYEDA FATIMA-TU-ZAHRA SALAAM-ULLAH-E-ALEEIHA HOSPITAL) will be guided by the four humanitarian principles: humanity, neutrality, impartiality and independence which will provide the basic for humanitarian action and response during and post disaster situations.

- **Transparency and Accountability:** NAINWA WELFARE TRUST (SYEDA FATIMA-TU-ZAHRA SALAAM-ULLAH-E-ALEEIHA HOSPITAL) believes in accountability towards the poorest and marginalized communities whose rights must be championed.
- **Partnership:** NAINWA WELFARE TRUST (SYEDA FATIMA-TU-ZAHRA SALAAM-ULLAH-E-ALEEIHA HOSPITAL) believes in working with all stakeholders to maximize the impact of its interventions, building partnerships who work with the same approaches, mission and programmes.
- **Inclusiveness:** In our work, NAINWA WELFARE TRUST (SYEDA FATIMA-TU-ZAHRA SALAAM-ULLAH-E-ALEEIHA HOSPITAL) will adhere to an all inclusive approach, and will not discriminate or deny development aid or rights for different groups based on differences of sex, race, nationality, ethnicity, class, religion, age, physical ability, caste, opinion.

Key Principles and Approaches in our Programming

NAINWA WELFARE TRUST (SYEDA FATIMA-TU-ZAHRA SALAAM-ULLAH-E-ALEEIHA HOSPITAL) develops and engages with the poorest and most marginalised communities in interventions which are pro- poor, participatory, which incorporate human rights based approaches and policy advocacy for change as well as promote the optimal use of available resources.

Target Groups

- Disaster prone communities.
- Poorest of the poor (destitute) and land/asset/shelterless families.
- Women headed/managed household (poor widow/orphans/divorced).
- Socially and politically marginalized communities.
- Small farmers
- Victims of violence and discrimination (especially women & kids)

What We Do

Community Led Programmes

- Community Based Early Warning Systems
- Community based Skill development centers
- Community based advocacy for education, health and justice.

Emergency & Humanitarian Response and Rehabilitation

- Emergency response
- Restoration and rehabilitation
- Preparedness and sustainable livelihoods

Community Based Disaster Risk Reduction and Climate Change

- Wash and environmental betterment including reforestation.
- Precautionary measures and linkages
- Emergency control system
- Rehabilitation of flood protection walls and embankments
CBOs/CCB Formation at village level and establishment of forums at district level for advocacy.
- Formation and activation of PTAs to make the good result

Sustainable Livelihood

- Rural Cooperatives (Agriculture, livestock and poultry management, home base workers, Dairy and utilization of other existing capacities and resources).

Social Development

Basic Education (literacy centers, Community based low cost primary schools) and different sessions with communities.

Collaborative Advocacy

Observing National/Global Days through seminars and rallies jointly with District Governments. Translation of relevant policies in to URDU.

Research and Development (Research on Climate Change impacts on vulnerable groups, usage of lands for multiple crops, organic methods).

Human and Institutional development

Trainings for COs and women groups to make them empowered where they can response any emergency and maximize their benefits as well.

Code of Conduct

NAINWA WELFARE TRUST (SYEDA FATIMA-TU-ZAHRA SALAAM-ULLAH-E-ALEEIHA HOSPITAL) follows "The code of conduct: Principal of Conduct for the International Red Cross and Red Crescent Movement and NGOs/Trust in Disaster Response Programmes and development sectors".

Networks/Memberships

- Local COs.
- District line departments.
- National Humanitarian Forum
- Punjab Humanitarian Network.
- National and international organizations

Funding Sources

- Institutional funding.
- Philanthropists
- Zakat/Charities

Partnership

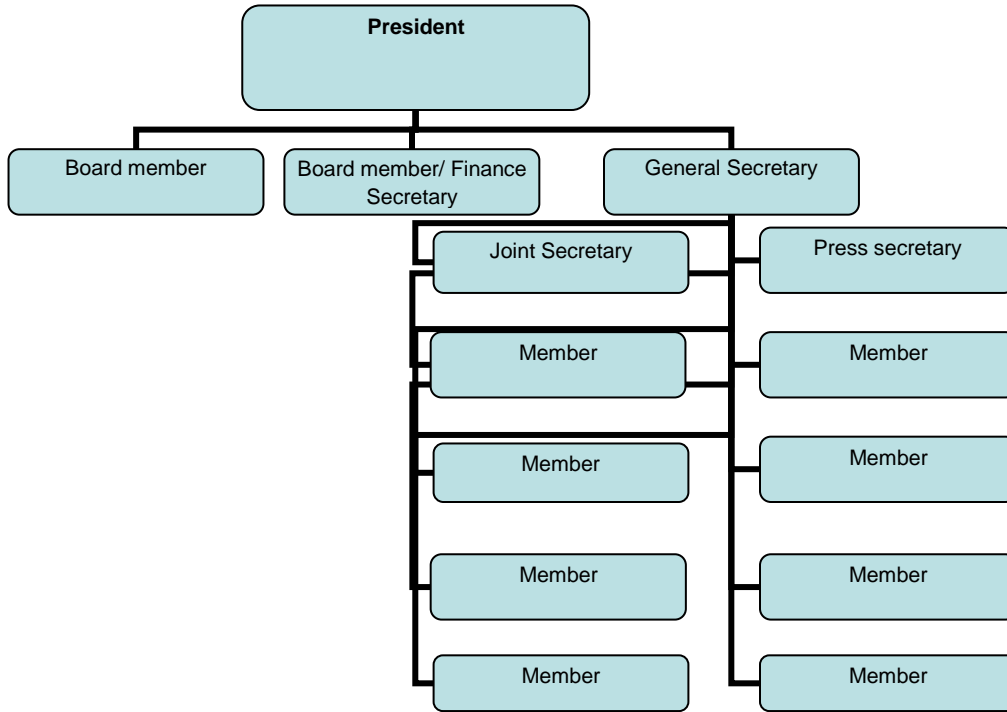
- A USAID Pakistan

Staff Strength

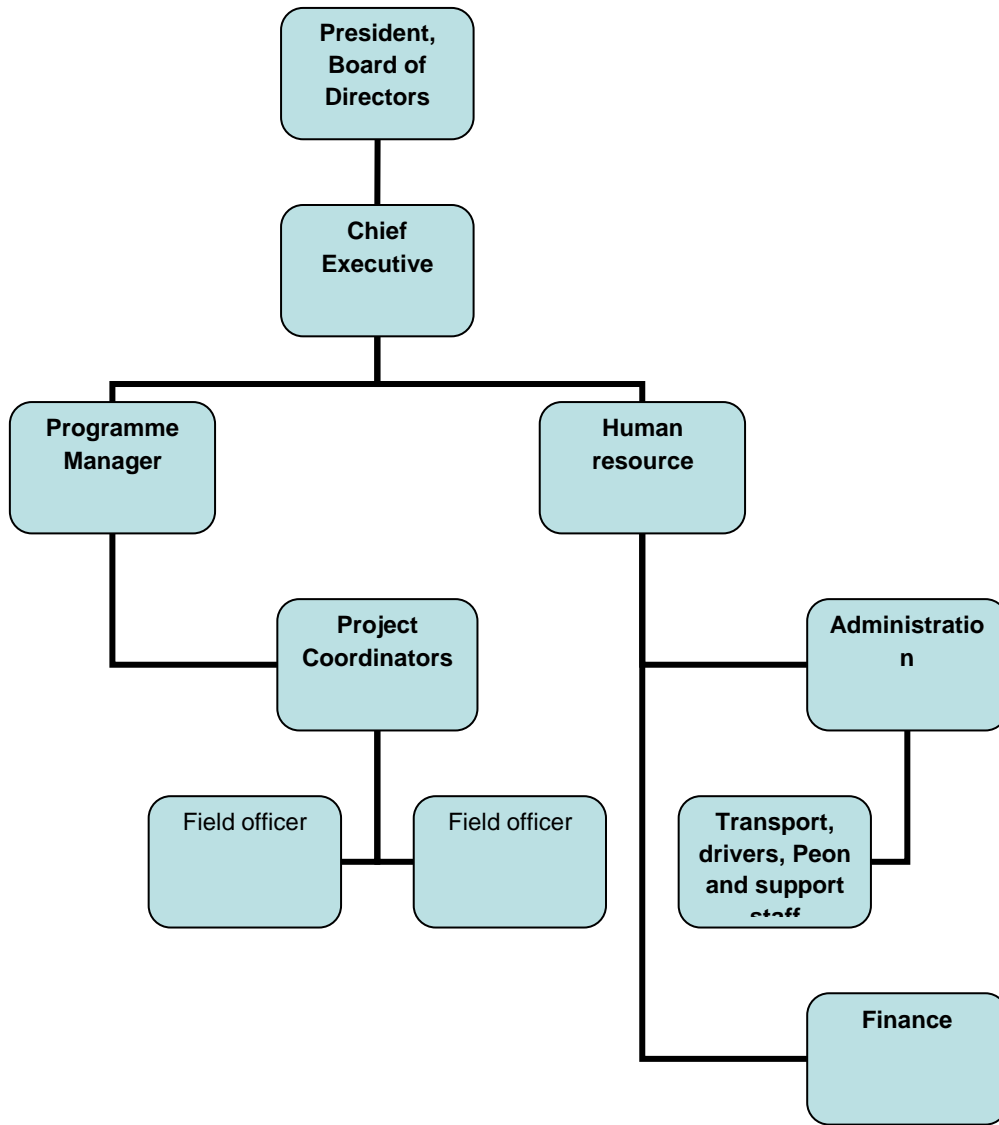
Staff Members: 86

Volunteers:33

Executive Board of NAINWA WELFARE TRUST (SYEDA FATIMA-TU-ZAHRA SALAAM-ULLAH-E-ALEEIHA HOSPITAL)



Administrative structure of NAINWA WELFARE TRUST (SYEDA FATIMA-TU-ZAHRA SALAAM-ULLAH-E-ALEEIHA HOSPITAL)



Head Office Bhakkar:

Adress: Balochan wala Shumali, Kotla Jam, P/O Khass, Tehsil & District Bhakkar

